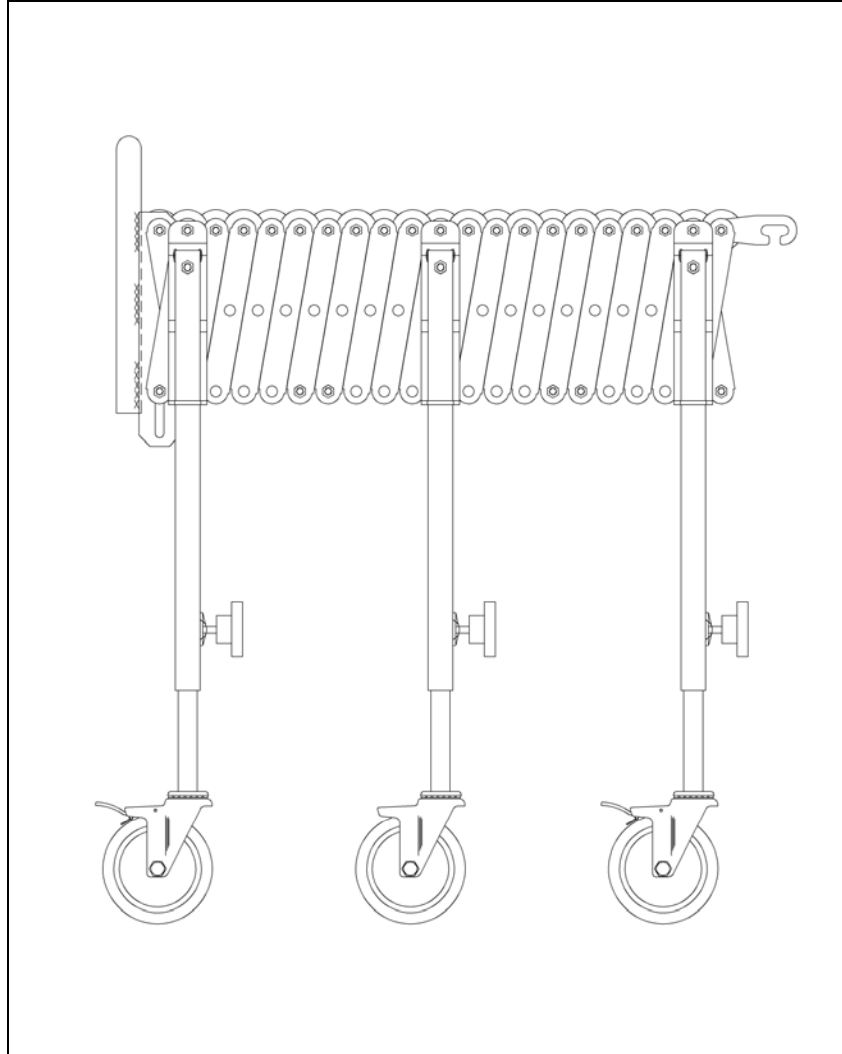


NESTAFLEX® 226 CONVEYOR

REPLACEMENT PARTS



Designed to simplify maintenance and prolong the productive life of Nestaflex® 226 Conveyors.

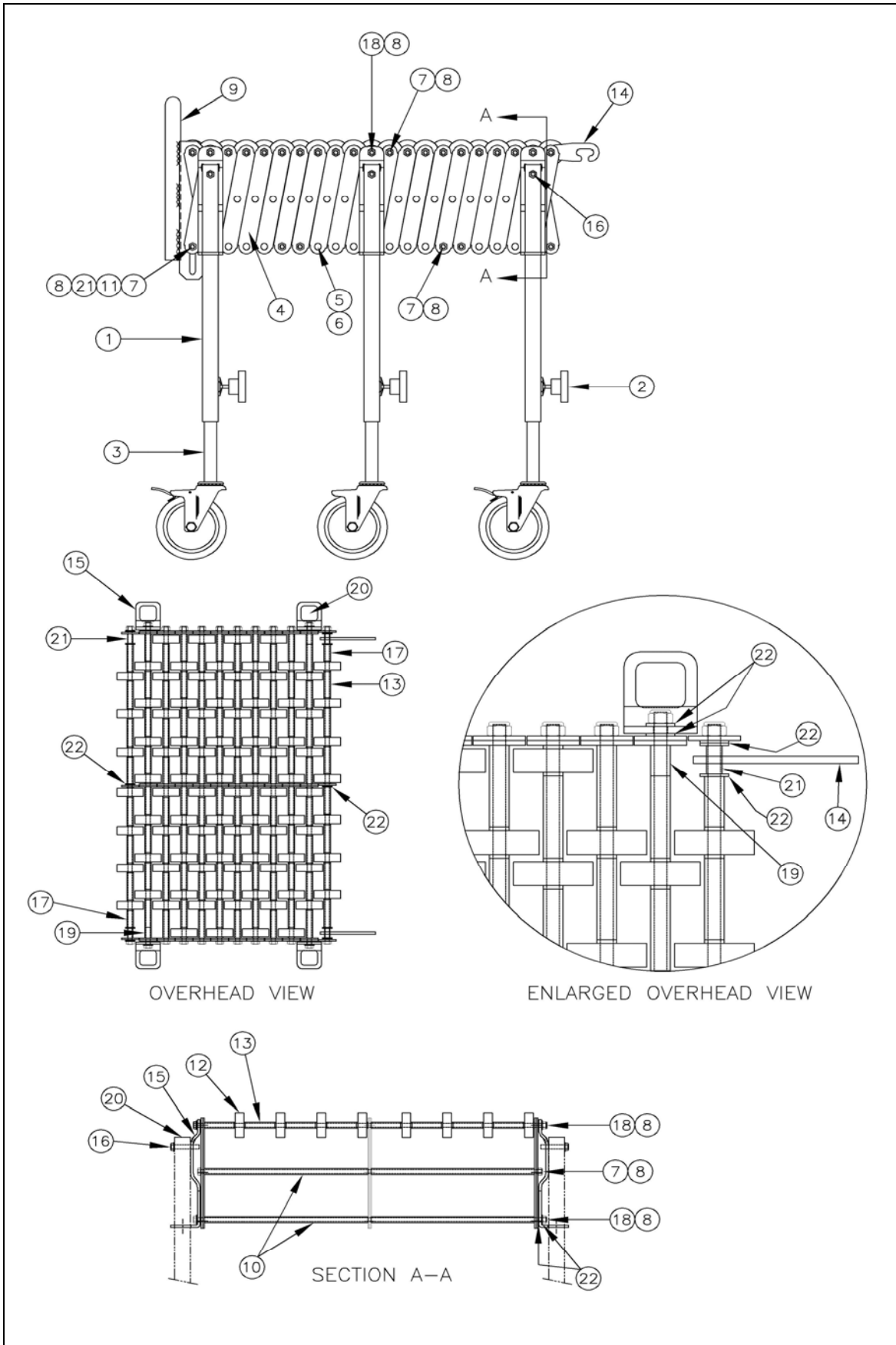
When ordering Nestaflex® replacement parts, review the following information:

1. Width of Conveyor
2. Color of skate wheel

When ordering H frames (leg assemblies) and/or inner legs with caster, review the additional information:

3. Conveyor height. Height is measured from the top of the skate wheels to the floor with the leg assemblies completely lowered and at the H frame/inner leg that is to be replaced.

NESTAFLEX® 226 CONVEYOR (24" width shown)



NESTAFLEX® 226 CONVEYOR - Replacement Part Numbers

	DESCRIPTION	MODEL		
		14" WIDTH	18" WIDTH	24" WIDTH
1	H Frame (Leg Assembly) For Conveyor Height: 20" to 28" 25" to 38" (Standard) 28" to 44" 36" to 52"	H FRAME 22614 ; 20/28" H FRAME 22614 ; 25/38" H FRAME 22614 ; 28/44" H FRAME 22614 ; 36/52"	H FRAME 22618 ; 20/28" H FRAME 22618 ; 25/38" H FRAME 22618 ; 28/44" H FRAME 22618 ; 36/52"	H FRAME 22624 ; 20/28" H FRAME 22624 ; 25/38" H FRAME 22624 ; 28/44" H FRAME 22624 ; 36/52"
2	Hand Knob 5/16-24	000027	000027	000027
3	Inner Leg Assembly (With 5" Caster With Brake) For Conveyor Height: 20" to 28" 25" to 38" (Standard) 28" to 44" 36" to 52"	006432 ; 20/28" 006432 ; 25/38" 006432 ; 28/52" 006432 ; 28/52"	006432 ; 20/28" 006432 ; 25/38" 006432 ; 28/52" 006432 ; 28/52"	006432 ; 20/28" 006432 ; 25/38" 006432 ; 28/52" 006432 ; 28/52"
	Inner Leg Assembly (With 5" Caster Without Brake) For Conveyor Height: 20" to 28" 25" to 38" (Standard) 28" to 44" 36" to 52"	006430 ; 20/28" 006430 ; 25/38" 006430 ; 28/52" 006430 ; 28/52"	006430 ; 20/28" 006430 ; 25/38" 006430 ; 28/52" 006430 ; 28/52"	006430 ; 20/28" 006430 ; 25/38" 006430 ; 28/52" 006430 ; 28/52"
4	Side Link - Zinc Plated	000019	000019	000019
5	Pivot Pin	000020	000020	000020
6	Retaining Ring Retaining Ring Hand Tool (Not Shown) (For Assembly of Pivot Pins/Retaining Rings)	000585 001903	000585 001903	000585 001903
7	Shaft Skatewheel: (Bed) 14-1/4" 18-1/4" 24-3/8"	003969 N/A N/A	N/A 003967 N/A	N/A N/A 001841
8	Nut Lock 5/16 Nylon	000022	000022	000022
9	Carton Stop (Only) Carton Stop Conversion Kit (Includes 9, 10, 21, 22, and Assembly Drawing)	003920 004361	003128 004362	003129 004363
10	Spacer Gray Plastic 13-1/2" 8-11/16" 11-11/16"	004122 N/A N/A	N/A 003197 N/A	N/A N/A 015794
11	Spacer Gray Plastic (At Carton Stop Only) 11-7/8" 7-13/16" 10-7/8"	015791 N/A N/A	N/A 015799 N/A	N/A N/A 015789
12	Skate Wheel: Red Nylon (N) Black Polymer (P) Steel (S)	000010 000632 000047	000010 000632 000047	000010 000632 000047
13	Spacer Gray Plastic (Between Skate Wheels) 1-7/16" 2-1/16" 2-7/64"	004108 N/A N/A	N/A 003195 N/A	N/A N/A 015793
14	Coupler	015168	015168	015168
15	K-Bracket (At Leg) 3" Axle Centers 3-1/2" Axle Centers 4" Axle Centers 5" Axle Centers (Standard) 5-1/4" Axle Centers	004453 004452 004454 004455 004456	004453 004452 004454 004455 004456	004453 004452 004454 004455 004456
16	Screw Self Tapping Hex 5/16-18	015084	015084	015084
17	Spacer Gray Plastic (At Ends) 5/8" 1-1/4" 1-9/32"	015792 N/A N/A	N/A 015798 N/A	N/A N/A 015790
18	Shaft Side Guide: (At Leg) 14-7/8" 18-7/8" 25"	003970 N/A N/A	N/A 003200 N/A	N/A N/A 002181
19	Spacer Gray Plastic 13/16"	004228	004228	004228
20	Plug Black Plastic	000283	000283	000283
21	Spacer Steel 3/4"	003192	003192	003192
22	Washer Flat 5/16" - Zinc Plated	000024	000024	000024

WARRANTY

NESTAFLEX® 226 CONVEYOR PRODUCTS

SELLER WARRANTS TO BUYER FOR A PERIOD OF ONE (1) YEAR FROM DATE OF SHIPMENT THAT THE GOODS AT THE TIME OF SHIPMENT WILL BE FREE FROM DEFECTS OF MATERIAL AND WORKMANSHIP AND WILL BE IN ACCORDANCE WITH SPECIFICATIONS WHICH ARE MADE A PART OF THE SALES CONTRACT BY REFERENCE THERETO. SELLER'S SOLE OBLIGATION UNDER THE FOREGOING WARRANTIES WILL BE LIMITED TO EITHER, AT SELLER'S OPTION, REPLACING OR REPAIRING DEFECTIVE GOODS OR REFUNDING THE PURCHASE PRICE FOR SUCH GOODS THERETOFORE PAID BY BUYER, AND BUYER'S EXCLUSIVE REMEDY FOR BREACH OF ANY OF SUCH WARRANTIES WILL BE ENFORCEMENT OF SUCH OBLIGATION OF SELLER. WHEN RETURN OR REPLACEMENT IS DEEMED NECESSARY, BY THE SELLER, THE COST OF TRANSPORTATION, NOT TO EXCEED THE USUAL COMMERCIAL METHOD OF SHIPMENT, WILL BE THE RESPONSIBILITY OF THE SELLER. THESE WARRANTIES WILL NOT EXTEND TO GOODS SUBJECTED TO MISUSE, NEGLIGENCE, ACCIDENT OR IMPROPER INSTALLATION OR MAINTENANCE OR WHICH HAVE BEEN ALTERED OR REPAIRED BY ANY ONE OTHER THAN SELLER OR ITS AUTHORIZED REPRESENTATIVE. THE FOREGOING WARRANTIES ARE EXCLUSIVE AND IN LIEU OF ALL OTHER WARRANTIES OF MERCHANTABILITY, FITNESS FOR PURPOSE AND OF ANY OTHER TYPE, WHETHER EXPRESS OR IMPLIED.



**9501 Granger Road
Cleveland, Ohio 44125
Phone: 216-587-1575
Toll Free: 800-669-1501
Fax: 216-587-2833
www.flexmh.com**